

Cable Puck Assembly View
W/Cylinder Shown

This Document
Contains Proprietary
Data that is property
of Pendant Systems
which reserves all
rights to it.
Unauthorized use
without authorization
is prohibited.

Pendant Systems

1670 Winchester Rd.
Bensalem, PA 19020
P-215-638-8552
F-215-638-8554
www.PendantSystems.com

UNLESS OTHERWISE SPECIFIED DIMENSIONS ARE IN BOTH INCHES & MILLIMETERS UNLESS OTHERWISE NOTED TOLERANCES:

LINEAR: XX= .02" XXX= \pm .010" ANGULAR: \pm 1 Degree

FINISH:
Nickel Plated

TITLE:
Cable Puck Assembly

DO NOT SCALE DRAWING
DEBUR AND BREAK SHARP EDGES

MATERIAL:
Zinc Casting

Part #
CC-Puck

REVISION

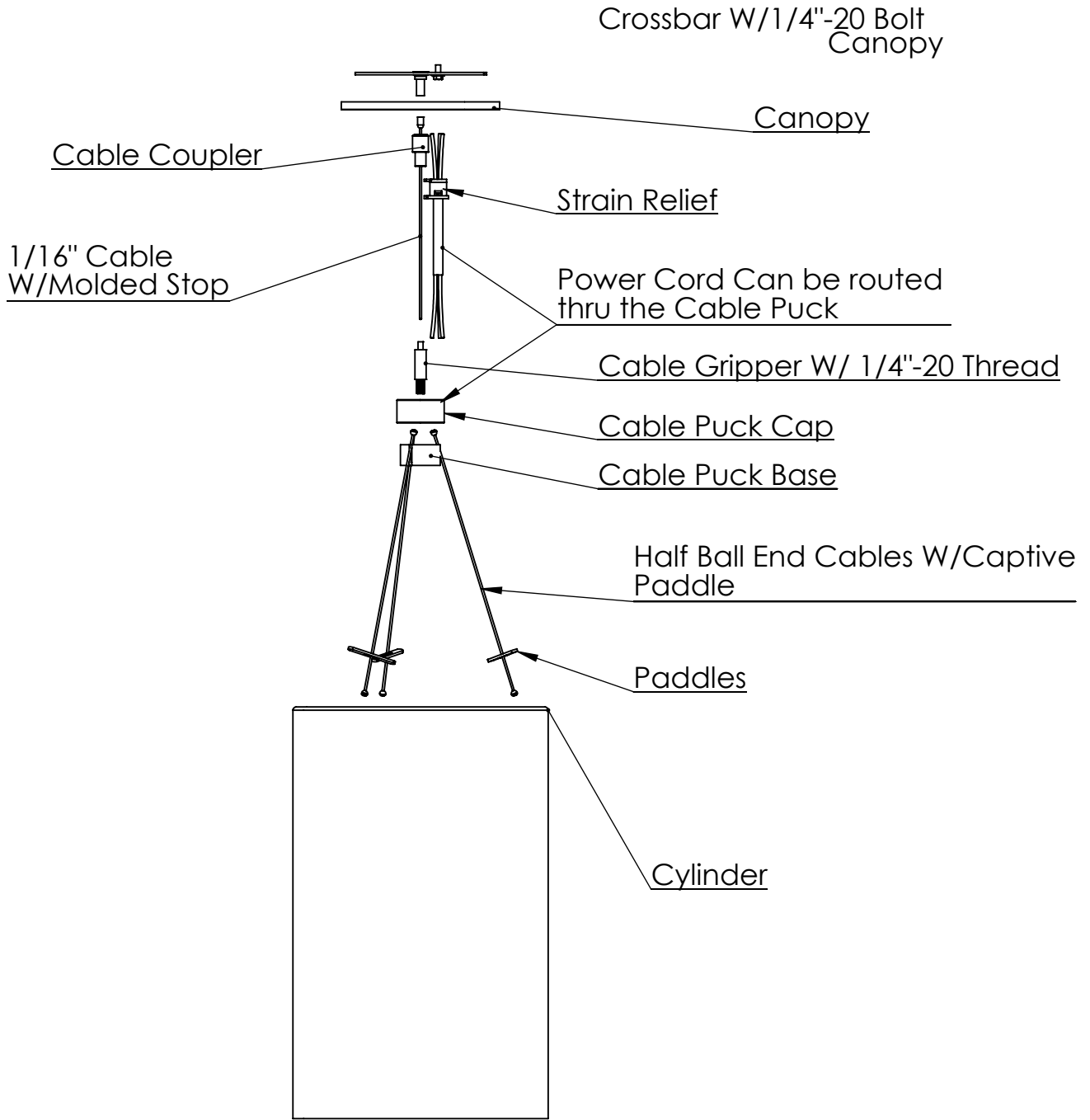
DRAWN DATE: 4/7/13

Drawn By: ML

SCALE:1:10

SHEET 1 OF 2

0



Exploded View W/ Cylinder

This Document Contains Proprietary Data that is property of Pendant Systems which reserves all rights to it. Unauthorized use without authorization is prohibited.

Pendant Systems

1670 Winchester Rd.
 Bensalem, PA 19020
 P-215-638-8552
 F-215-638-8554
 www.PendantSystems.com

UNLESS OTHERWISE SPECIFIED DIMENSIONS ARE IN BOTH INCHES & MILLIMETERS UNLESS OTHERWISE NOTED TOLERANCES:
 LINEAR: XX= .02" XXX= \pm .010" ANGULAR: \pm 1 Degree

FINISH:
 Nickel Plated

TITLE:
Cable Puck Assembly

DO NOT SCALE DRAWING
 DEBUR AND BREAK SHARP EDGES

MATERIAL:
 Zinc Casting

Part #
 CC-Puck

REVISION
 0

DRAWN DATE: 4/7/13

Drawn By: ML

SCALE:1:10

SHEET 2 OF 2