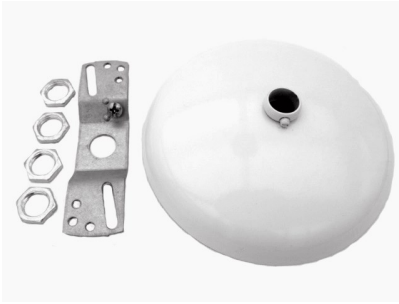


Pendant Systems

The Lighting Suspension Specialists www.PendantSystems.com P-215-638-8552 F-215-638-8554

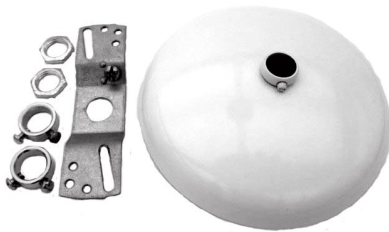
Traditional Pendant Kits 1/4"IP



C-400 Canopy Set (1/4"IP Stems)

- 1-#48 Shallow Canopy S.R.I. Wht.
- 1-#67 Crossbar Zinc Plated W/GS
- 4-#25 1/4"IP Hex Nuts
- 1-#32 Ground Screw

Used with 1/4"IP Stems for track lighting and light weight fixtures.



C-401 Canopy Set (1/4"IP Stems)

- 1-#48 Shallow Canopy S.R.I. Wht.
- 1-#67 Crossbar Zinc Plated W/GS
- 2-#31 Rings Plated, with 6/32" Screws
- 2-#25 1/4"IP Hex Nuts
- 1-#32 Ground Screw

Used with 1/4"IP Stems for track and light weight fixtures. Rings are used when field cutting 1/4"IP stems.



C-402 Canopy Set(1/4"IP Stems)

- 1-#48 Shallow Canopy S.R.I. Wht.
- 1-#67 Crossbar Zinc Plated W/GS
- 2-#31 Rings Plated, with 6/32" Screws
- 1-#55 1/4"IP Flange Wht. W/Screws

Used with 1/4"IP stems. Flange can be mounted to back of track or lighting fixture.



C-405 Canopy Set (1/4"IP Stems)

- 1-#48 Shallow Canopy S.R.I. Wht.
- 1-#39 1/4"IP Tapped Crossbar W/G.S.
- 3-#25 1/4"IP Hex Nuts

C-406 Canopy Set (1/4"IP Stems)

The same as C-405 but with 3-Heavy Duty 1/4"IP #64 Hex Nuts in place of the 3-#25 as above.



C-405TC Canopy Set (1/4"IP Stems)

- 1-#48 Shallow Canopy S.R.I. Wht.
- 1-#39 1/4"IP Tapped Crossbar W/G.S.
- 2-#25 1/4"IP Hex Nuts
- 1-TC Base Track Base
- 1-TC1/4 1/4"IP Threaded Top Plate
- 2- #217 Ground Screws

Pendant Systems

The Lighting Suspension Specialists www.PendantSystems.com P-215-638-8552 F-215-638-8554

Traditional Pendant Kits 1/4"IP



C-407 Canopy Set (1/4"IP Stems)

- 1-#48 Shallow Canopy S.R.I. Wht.
- 1-#36 Hickey 1/4"IP Slip x 3/8"IP Tap
- 4-#64 Heavy Duty 1/4"IP Hex Nuts

Used for Heavy Fixture Mounts with 1/4"IP Stems. Hickey is usually used on a 3/8"IP stud in the junction box.



C-408 Canopy Set (1/4"IP Stems)

- 1-#48 Shallow Canopy S.R.I. Wht.
- 1-#39 1/4"IP Tapped Crossbar W/G.S.
- 1-#55 1/4"IP Flange Wht W/Screws
- 2-#25 1/4"IP Hex Nuts

Used with 1/4"IP Stems. Flange can be mounted to back of track or lighting fixture.



C-414 Canopy Set (1/4"IP Stems)

- 1-#87 Flat Canopy S.R.I. Wht.
- 1-#36 Hickey 1/4"IP Slip x 3/8"IP Tap
- 4-#64 Heavy Duty 1/4"IP Hex Nuts

Used for Heavy Fixture Mounts with 1/4"IP Stems. Hickey is usually used on a 3/8"IP Stud in the junction box.



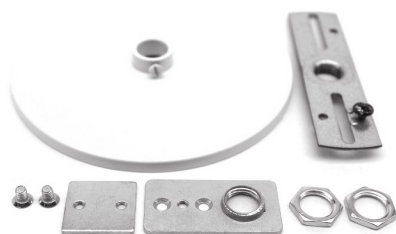
C-415 Canopy Set (1/4"IP Stems)

- 1-#87 Flat Canopy S.R.I. Wht.
- 1-#39 1/4"IP Tapped Crossbar W/G.S.
- 3-#25 1/4"IP Hex Nuts

C-416 Canopy Set (1/4"IP Stems)

The same as C-415 but with 3-Heavy Duty #64 Hex Nuts in place of the 3-#25 as above.

*Add Suffix SQ for Square Canopy



C-415TC Canopy Set (1/4"IP Stems)

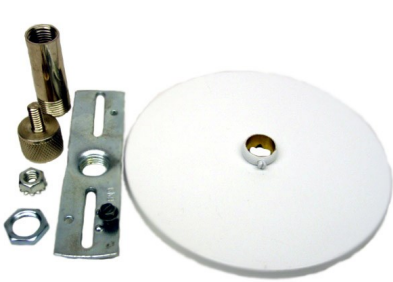
- 1-#87 Flat Canopy S.R.I. Wht.
- 1-#39 1/4"IP Tapped Crossbar W/G.S.
- 2-#25 1/4"IP Hex Nuts
- 1-TC Base Track Base
- 1-TC1/4 1/4"IP Threaded Top Plate
- 2-#217 Ground Screws

Stems must be ordered separately and are not included in kits

Pendant Systems

The Lighting Suspension Specialists www.PendantSystems.com P-215-638-8552 F-215-638-8554

Traditional Pendant Kits 1/4"IP



C-415 1/4-20 BL Canopy Set(1/4"IP Stems)

- 1-#87 Flat Canopy S.R.I. Wht.
- 1-#39 Crossbar Zinc Plated W/GS
- 1-#25 1/4"IP Hex Nuts
- 1-#PF3/8IP-BL Blank Power Feed Tube
- 1-#A3/8 x 1/4-20 3/8"IP x 1/4"-20 Adapter
- 1-#104 1/4"-20 Locknut w/Lock washer

Used with 1/4"IP Stems for stem mounting fixtures with 1/4"-20 Mounting Brackets Non-Feed Side



C-415 1/4-20 CF Canopy Set (1/4"IP Stems)

- 1-#87 Flat Canopy S.R.I. Wht.
- 1-#39 Crossbar Zinc Plated W/GS
- 1-#25 1/4"IP Hex Nuts
- 1-#PF3/8IP-CF Power Feed Tube
- 1-#A3/8 x 1/4-20 3/8"IP x 1/4"-20 Adapter
- 1-#104 1/4"-20 Locknut w/Lock washer

Used with 1/4"IP Stems for stem mounting fixtures with 1/4"-20 Mounting Brackets Feed Side



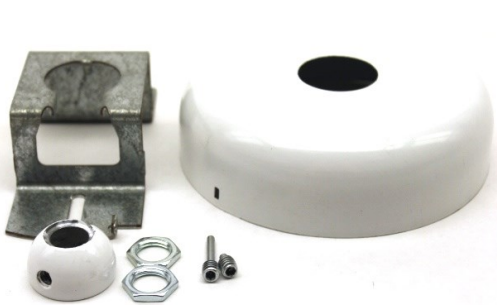
C-445 Canopy Set (1/4"IP Stems)

- 1-#43 Canopy Wht. W/Side Holes
- 1-#33 Swivel Crossbar
- 1-#35 1/4"IP Tapped Half Ball
- 2-#25 1/4"IP Hex Nuts (60° Degree Swivel Maximum)
- 1-#32 Ground Screw

C-446 Canopy Set (1/4"IP Stems)

The same as C-445 but with 2-Heavy Duty #64 Hex Nuts in place of the 2-#25 as above.

Use Suffix WPB for a Powder Coated White Half Ball
See Field Cuttable Adjustable System



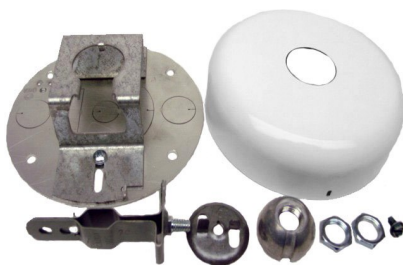
C-445 ADJ Canopy Set (1/4"IP Stems)

- 1-#43 Canopy Wht. W/Side Holes
- 1-#33 Swivel Crossbar
- 1-#35 ADJ 1/4"IP Tapped Half Ball
- 2-#25 1/4"IP Hex Nuts
- 1-#32 Ground Screw

(60° Degree Swivel Maximum)

*Add Suffix TK for ADJ Tool Kit - 1/8" Drill Bit & 1/8" Allen Wrench

See Field Cuttable Adjustable System



C-445 FP DC Canopy Set(1/4"IP Stems)

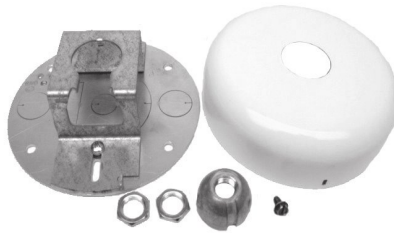
- 1-#43 Canopy
- 1-#33 Crossbar Zinc Plated
- 1- Flash Plate Attached to #33 Crossbar
- 1-#181 Ground Screw
- 1-#35 1/4"IP Half Ball
- 2-#25 Hex Nuts
- 1-#110 IDS T-Bar Clip W/Winged Locknut
- 1-#32 Ground Screw

Used with 1/4"IP Stems for stem mounting fixtures with swivel on Drop Ceiling

Pendant Systems

The Lighting Suspension Specialists www.PendantSystems.com P-215-638-8552 F-215-638-8554

Traditional Pendant Kits 1/4"IP & 3/8"IP



C-445 FP Canopy Set (1/4"IP Stems)

- 1-#43 Canopy
 - 1-#33 Crossbar Zinc Plated
 - 1- Flash Plate Attached to #33 Crossbar
 - 1-#181 Ground Screw
 - 1-#35 1/4"IP Half Ball
 - 2-#25 Hex Nuts
 - 1-#32 Ground Screw
- Used with 1/4"IP Stems for stem mounting fixtures with swivel



C-445 1/4-20 BL Canopy Set (1/4"IP Stems)

- 1-#43 Canopy W/Side Holes
- 1-#33 Crossbar Zinc Plated
- 1-#35 1/4"IP Half Ball
- 2-#25 Hex Nuts
- 1-#PF 3/8 IP BL 3/8" IP x 1/4" IP PF Tube
- 1-#104 1/4-20 Keps Nut
- 1-#A3/8IPx1/4-20 3/8"IP x 1/4-20 Adapter
- 1-#32 Ground Screw



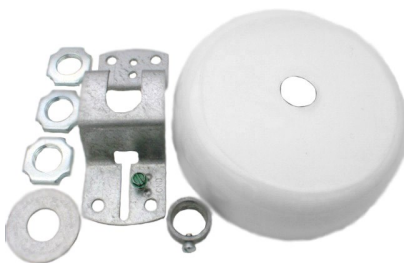
C-445 1/4-20 CF Canopy Set (1/4"IP Stems)

- 1-#43 Canopy W/Side Holes
- 1-#33 Crossbar Zinc Plated
- 1-#35 1/4"IP Half Ball
- 2-#25 Hex Nuts
- 1-#PF 3/8 IP CF 3/8" IP x 1/4" IP PF Tube
- 1-#104 1/4-20 Keps Nut
- 1-#A3/8IPx1/4-20 3/8"IP x 1/4-20 Adapter
- 1-#32 Ground Screw



C-700 Canopy Set (1/4"IP)

- 1-#52 Twin Shallow Canopy White
 - 1-#39 1/4"IP Tapped Crossbar W/G.S.
 - 1-#49D 1/4"IP x 2"Long Nipple
 - 1-#50 1/4"IP Cap Nut White
 - 2-#51 1/4"IP Knurled Nuts White
 - 6-#25 1/4"IP Hex Nuts
 - 2-6"Stem 1/4"IP White
- Holes are 11" C to C with one in center



C-500 Canopy Set (3/8"IP Stems)

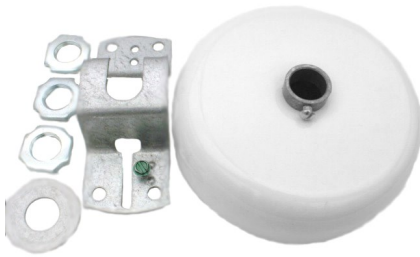
- 1-#40 Canopy White
- 1-#15 Crossbar
- 3-#22 3/8"IP Locknuts
- 1-#14 3/8"IP Slip Ring W/Screw
- 1-#24 3/8"IP Slip Washer Zinc

Used with 3/8"IP Stems for Hanging Fluorescent Lighting and Exit Signs.
Add Suffix PR for Painted Slip Ring.

Pendant Systems

The Lighting Suspension Specialists www.PendantSystems.com P-215-638-8552 F-215-638-8554

Traditional Pendant Kits 3/8"IP



C-501 Canopy Set (3/8"IP)

- 1-#41 Canopy W/#14 S.R.I. Raw
- 1-#15 Crossbar
- 3-#22 3/8"IP Locknuts
- 1-#24 3/8"IP Slip Washer Zinc

Used with 3/8"IP Stems for Hanging Fluorescent Lighting and Exit Signs.
Add Suffix PR for Painted Slip Ring.



C-503/4 Canopy Set(3/8"IP Stems)

- 1-#42 Canopy White W/1-1/16" Hole
- 1-#18 Hangstraight W/Ring Nickel
- 1-#21 Hickey 3/8"IP Slip x 3/8"IP Tap
- 1-#26-.75 3/8"IP x 3/4" Long Nipple
- 4-#22 3/8"IP Locknuts

C-503 Canopy Set (3/8"IP Stems)

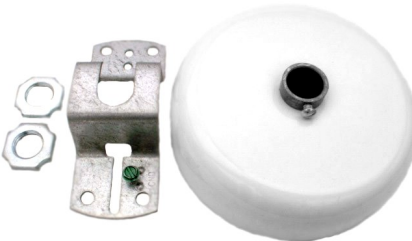
Same as C503 but with 1-#22 Locknuts
NYC-Schools. 10 Degree Swivel Max.



C-504 Canopy Set (3/8"IP)

- 1-#41 Canopy S.R.I. Raw
- 1-#21 Hickey 3/8"IP Slip x 3/8"IP Tap
- 4-#22 3/8"IP Locknuts

Used with 3/8"IP Stems for Hanging Fluorescent Ltg and Exit Signs. Hickey attaches to Stud in Jct. Box.
Add Suffix PR for Painted Slip Ring



C-505 Canopy Set (3/8"IP)

- 1-#41 Canopy W/#14 S.R.I. Raw
- 1-#15 Crossbar
- 2-#22 3/8"IP Locknuts

Used with 3/8"IP Stems for Hanging Fluorescent Lighting and Exit Signs.
Add Suffix PR for Painted Slip Ring.



C-514 Canopy Set (3/8"IP)

- 1-#88 Flat Canopy W/#14 S.R.I. White Inserted
- 1-#21 Hickey 3/8"IP Slip x 3/8"IP Tap
- 4-#22 3/8"IP Lock Nuts

Pendant Systems

The Lighting Suspension Specialists www.PendantSystems.com P-215-638-8552 F-215-638-8554

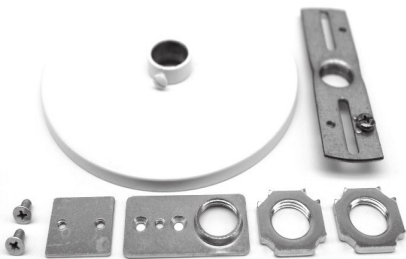
Traditional Pendant Kits 3/8"IP

C-515 Canopy Set (3/8"IP Stems)



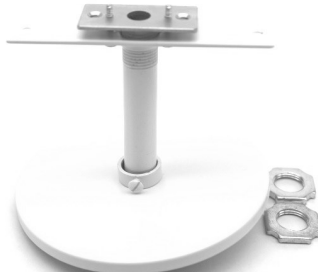
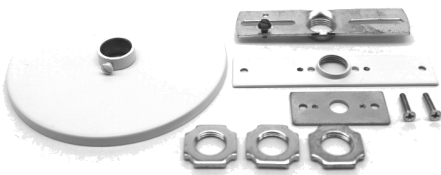
- 1-#88 Flat Canopy W/#14 S.R.I. White Inserted
- 1-#38 3/8"IP Tapped Crossbar W/G.S.
- 3-#22 3/8"IP Lock Nuts

C-515TC Canopy Set (3/8"IP Stems)



- 1-#88 Flat Canopy W/#14 S.R.I. White Inserted
- 1-#38 3/8"IP Tapped Crossbar W/G.S.
- 2-#22 3/8"IP Lock Nuts
- 1-TC Base Track Base
- 1-TC3/8 3/8"IP Threaded Top Plate
- 2-#217 Ground Screws

C-515EXIT Canopy Set (3/8"IP Stems)



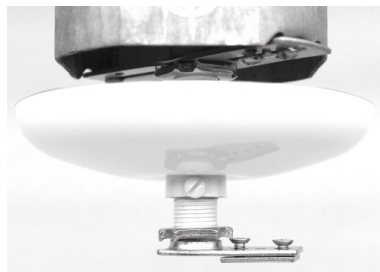
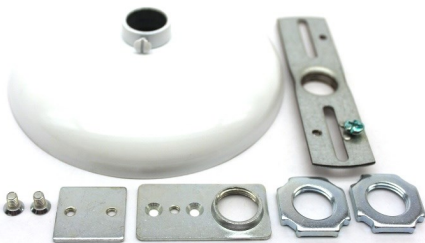
- 1-#88 Flat Canopy W/#14 S.R.I. White Inserted
- 1-#38 3/8"IP Tapped Crossbar W/G.S.
- 3-#22 3/8"IP Lock Nuts
- 1-Exit Base
- 1-Exit Brkt 3/8"IP White
- 2-Mono Point Screws

C517 Canopy Set (3/8"IP Stems)



- 1-#72 5" White Canopy W/#14 SRI White
- 1-#38 3/8"IP Crossbar W/Ground Screw
- 3-#22 3/8"IP Locknut

C517TC Canopy Set (3/8"IP Stems)

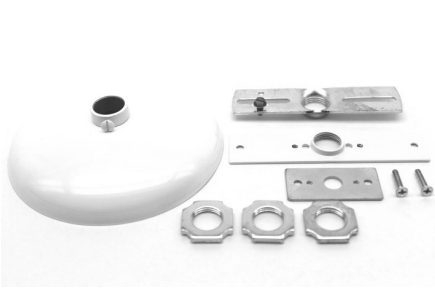


- 1-#72 5" White Canopy W/#14 SRI White
- 1-#38 3/8"IP Crossbar W/Ground Screw
- 3-#22 3/8"IP Locknut
- 1-TC Base Track Base
- 1-TC3/8 3/8"IP Threaded Top Plate
- 2-#217 Ground Screws

Pendant Systems

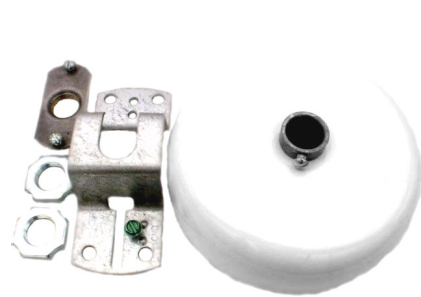
The Lighting Suspension Specialists www.PendantSystems.com P-215-638-8552 F-215-638-8554

Traditional Pendant Kits 3/8"IP



C517EXIT Canopy Set (3/8"IP Stems)

- 1-#72 5" White Canopy W/#14 SRI White
- 1-#38 3/8"IP Crossbar W/Ground Screw
- 3-#22 3/8"IP Locknut
- 1-Exit Base
- 1-Exit Brkt 3/8"IP White
- 2-Mono Point Screws



C-518 Canopy Set (3/8"IP)

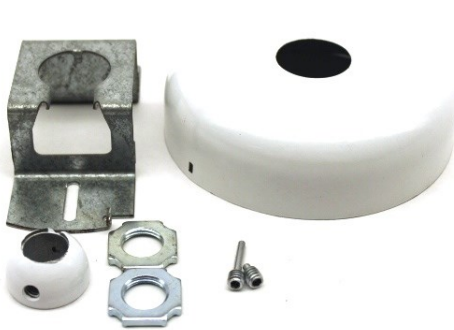
- 1-#41 Canopy White S.R.I.
- 1-#15 Crossbar
- 2-#22 3/8"IP Locknuts
- 1-#23 3/8"IP Flange W/Screws

Used with 3/8"IP Stems for Hanging Fluorescent Ltg and Exit Signs.
Add Suffix PR for Painted Slip Ring



C-545 Canopy Set (3/8"IP)

- 1-#43 Canopy Wht. W/Side Holes
 - 1-#33 Crossbar
 - 1-#34 3/8"IP Tapped Half Ball
 - 2-#22 3/8"IP Locknuts
 - 1-#32 Ground Screw
- Swivel Canopy Set used with 3/8"IP Stems for Hanging Fluorescent Ltg and Exit Signs. Add Suffix PB for Painted Ball. (41° Degree Swivel)
See Field Cuttable Adjustable System

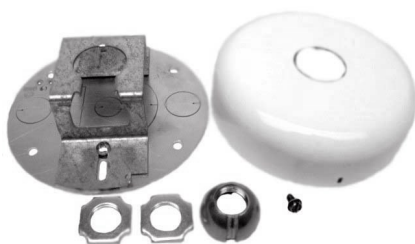


C-545 ADJ Canopy Set (3/8"IP Stems)

- 1-#43 Canopy Wht. W/Side Holes
- 1-#33 Swivel Crossbar
- 1-#34 ADJ 3/8"IP Tapped Half Ball
- 2-#22 3/8"IP Hex Nuts
- 1-#32 Ground Screw

(41° Degree Swivel Maximum)
*Add Suffix TK for ADJ Tool Kit - 1/8" Drill Bit & 1/8" Allen Wrench

See Field Cuttable Adjustable System



C-545 FP Canopy Set (3/8"IP Stems)

- 1-#43 Canopy
 - 1-#33 Crossbar Zinc Plated
 - 1- Flash Plate attached to #33 Crossbar
 - 1-#181 Ground Screw
 - 1-#34 3/8"IP Half Ball
 - 2-#22 3/8"IP Lock Nuts
 - 1-#32 Ground Screw
- Used with 3/8"IP Stems for stem mounting fixtures with swivel

Pendant Systems

The Lighting Suspension Specialists www.PendantSystems.com P-215-638-8552 F-215-638-8554

Traditional Pendant Kits 3/8"IP



C-545 FP DC Canopy Set (3/8"IP Stems)

- 1-#43 Canopy
 - 1-#33 Crossbar Zinc Plated
 - 1- Flash Plate Attached to #33 Crossbar
 - 1-#181 Ground Screw
 - 1-#34 3/8"IP Half Ball
 - 2-#22 3/8"IP Lock Nuts
 - 1-#110 IDS T-Bar Clip W/Winged Locknut
 - 1-#32 Ground Screw
- Used with 3/8"IP Stems for stem mounting fixtures with swivel on drop ceiling



C-545 TR Canopy Set (3/8"IP)

- 1-#46 Canopy Wht. W/Side Holes
 - 1-#33 Crossbar
 - 1-#34 3/8"IP Tapped Half Ball
 - 2-#22 3/8"IP Locknuts
 - 1-#32 Ground Screw
- Swivel Canopy Set used with 3/8"IP Stems for Hanging Fluorescent Ltg and Exit Signs. (41° Degree Swivel)
See Field Cuttable Adjustable System



C-545 TR ADJ Canopy Set (3/8"IP)

- 1-#46 Canopy Wht. W/Side Holes
 - 1-#33 Crossbar
 - 1-#34 3/8"IP Tapped Half Ball
 - 2-#22 3/8"IP Locknuts
 - 1-#32 Ground Screw
- Swivel Canopy Set used with 3/8"IP Stems for Hanging Fluorescent Ltg and Exit Signs. (41° Degree Swivel)
*Add TK for ADJ Tool Kit - 1/8" Drill Bit & 1/8" Allen Wrench
See Field Cuttable Adjustable System



C-600 Canopy Set (3/8"IP)

- 1-#11 Twin Canopy White
 - 1-#19 Crossbar
 - 2-#14 3/8"IP Slip Ring W/ Screw
 - 5-#22 3/8"IP Locknut
- Double Stem Canopy Set used with 3/8"IP Stems for hanging Fluorescent Lighting. Holes are 10" C to C

C-600/7 Canopy Set (w/7-#22 Locknuts)

C-600/8 Canopy Set (w/8-#22 Locknuts)



C-603 Canopy Set (3/8"IP)

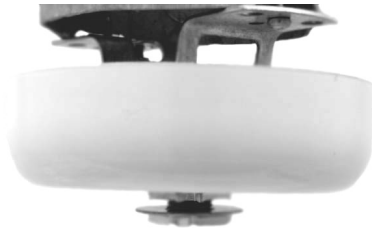
- 1-#11A Twin Canopy White
 - 1-#19 Crossbar
 - 2-#26-1.75 3/8"IP x 1 3/4" Long Nipple
 - 8-#22 3/8"IP Locknuts
 - 2-#18 Hangstraight W/Ring Nickel
 - 10 Degree Swivel Maximum
- Used with 3/8"IP Stems for hanging Fluorescent Lighting.-N.Y.C. Schools

Stems must be ordered separately and are not included in kits

Pendant Systems

The Lighting Suspension Specialists www.PendantSystems.com P-215-638-8552 F-215-638-8554

Traditional Pendant Kits 3/8"IP & 1/2" IP



C-800 Canopy Set (3/8"IP)

- 1-#40 Canopy White
- 1-#15 Crossbar
- 4-#22 3/8"IP Locknuts
- 1-#24 3/8"IP Slip Washer Zinc
- 1-#26-1.75 3/8"IP x 1 3/4"Long Nipple

Used to Flush Mount Fluorescent Lighting Fixtures
Flush to Canopy



C-900 Ceiling Spacer

- 1- Ceiling Spacer
- 2-#22 3/8"IP Locknuts
- 1-#24 3/8"IP Slip Washer Zinc

Used to Hang Fluorescent Lighting Fixtures for 1.5"
Clearance from Ceiling. Spacer will Clip onto Drop
Ceiling Grid or mount in "J" Box



C605 Canopy Set (1/2"IP)

- 1-#168 5" Canopy 1 1/2"Deep W/#142 1/2"IP SRI White
- 1-#159 1/2"IP Crossbar W/Ground Screw
- 2-#77 1/2"IP Locknut



C615 Canopy Set (1/2"IP)

- 1-#146 5" Flat Canopy W/#142 1/2"IP SRI White
- 1-#159 1/2"IP Crossbar W/Ground Screw
- 2-#77 1/2"IP Locknut



C617 Canopy Set (1/2"IP)

- 1-#149 5" Canopy 7/8" Deep W/#142 1/2"IP SRI White
- 1-#159 1/2"IP Crossbar W/Ground Screw
- 2-#77 1/2"IP Locknut

Pendant Systems

The Lighting Suspension Specialists www.PendantSystems.com P-215-638-8552 F-215-638-8554

Traditional Pendant Kits 1/2"IP



C645 Canopy Set (1/2"IP)

- 1-#43 Canopy Wht. W/Side Holes
- 1-#33 Crossbar
- 1-#147 Wht 1/2"IP Tapped Half Ball
- 2-#77 1/2"IP Locknuts

39° Swivel Maximum



C645 FP Canopy Set (1/2"IP)

- 1-#43 Canopy Wht. W/Side Holes
- 1-#33 Crossbar
- 1-#Flash Plate Attached to #33
- 1-#147 1/2"IP Tapped Half Ball
- 2-#77 1/2"IP Locknuts

39° Swivel Maximum



C645 FP DC Canopy Set (1/2"IP)

- 1-#43 Canopy Wht. W/Side Holes
- 1-#33 Crossbar
- 1-#Flash Plate Attached to #33
- 1-#147 1/2"IP Tapped Half Ball
- 2-#77 1/2"IP Locknuts
- 1-#110 1/4-20 Stud T-Bar Clip

39° Swivel Maximum



C745 Canopy Set (3/4"IP)

- 1-#43 Canopy Wht. W/Side Holes
- 1-#33 Crossbar
- 1-#147 Wht 1/2"IP Tapped Half Ball
- 1-#167 1/2"IP x 3/4"Reducer

39° Swivel Maximum

Stems must be ordered separately and are not included in kits