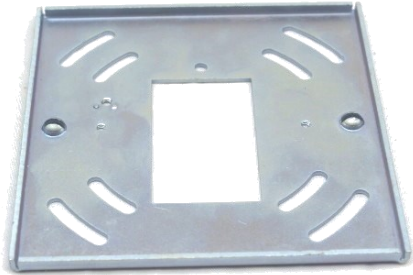


Pendant Systems

The Lighting Suspension Specialists www.PendantSystems.com P-215-638-8552 F-215-638-8554

MP Crossbars



MP Crossbar w/ Cable Sockets

4.8" square crossbar x .237" H x .080" material thickness
zinc plated steel will mount to 4" octagonal & 4" square boxes



MP Plates

Center Mounting Plates for MP-Crossbar
2.82" L x 1.65" W x .075" Material Thickness Zinc Plated Steel
Tapped 8/32" Hole

Available in Tapped Center Holes (referenced below)
or Half Ball Opening for #35, 34, 147 Swivel Balls



MP Swivel Clip

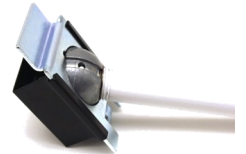
Mono Point Swivel Retaining Clip for MP-Plate HB
Spring Steel

Catalog #	Description
MP Plate HB	Mono Point Plate for Half Ball
MP Plate 1/2 IP	1/2" IP Mono Point Plate
MP Plate 3/8 IP	3/8" IP Mono Point Plate
MP Plate 1/4 IP	1/4" IP Mono Point Plate
MP Plate 1/8 IP	1/8" IP Mono Point Plate



MP Crossbar Round

Mono Point Crossbar Round 4.76" OD x 14 Gauge Steel



**Illustration of Monopoint Swivel Assembly
utilizing MP Crossbar, MP Plate HB & MP Swivel Clip**

Pendant Systems

The Lighting Suspension Specialists www.PendantSystems.com P-215-638-8552 F-215-638-8554

Crossbars



#158 Crossbar
1/4"-20 Countersunk Crossbar
with Ground Screw & 1/4"-20 Flat Head
Screw Inserted
3 7/8"L x 3/4"W Zinc Plated x 14 Gauge



#108 Crossbar
Heavy Duty 1/4"-20NC Bracket
Crossbar with Ground Screw
Inserted
4 3/16"L x 1"W x 14 Gauge Zinc
Plated



1/8"IP Crossbars with Ground Screw
Inserted

#58- 3 7/8"L x 3/4"W Zinc Plated x
16 Gauge

#178- 4 1/8"L x 3/4"W Zinc Plated
x 14 Gauge



#38 Crossbar
3/8"IP Tapped Crossbar
4 3/16"L x 1"W Zinc Plated x 14 Gauge



#39 Crossbar
1/4"IP Tapped Crossbar with Ground
Screw
Inserted 4 3/16"L x 1"W Zinc Plated x
14 Gauge



#159 Crossbar
Bracket Crossbar with 1/2"IP Tapped
Center Hole 4"L x 1.11"W



#19 Crossbar
10" Crossbar End Holes are
10"C to C 11 1/4"L x 1 3/4"W x 3/4"H



Bracket Crossbars Slip Fit Center Hole

#67 -1/4"IP Slip Crossbar
#68 -3/8"IP Slip Crossbar
3 3/4"L x 1"W x 7/16"H x 16 Gauge Zinc

Pendant Systems

The Lighting Suspension Specialists www.PendantSystems.com P-215-638-8552 F-215-638-8554

Crossbars



#62 Crossbar

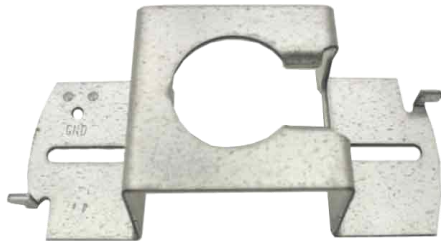
Universal crossbar 2.25" CH 2.75" & 3.5"
Tapped 8/32" holes C to C



Universal Crossbars

#66 -4" OD & 1.8" Center Hole
8/32" Tapped Holes on 3 1/2", 2 3/4", 2
1/8" w/ Ground Screw

#143 -1/2" IP Slip Center Hole
4"L x 3"W Zinc Plated



#33 Crossbar

Swivel Crossbar for
#34, #35 & 147 Half Balls
2"W x 4 7/8"L x 1 3/8"H x 14 Gauge



#15 Crossbar

3/8" IP Slip Crossbar
1 3/4"W x 4 5/8"L x 14 Gauge



#358 Micro Crossbar

Universal crossbar 3.35"L x .781"W x .079" Thick
Tapped 8/32" Holes 2" Apart W/ Ground
Screw 1/4"-20 Countersunk Screw Included



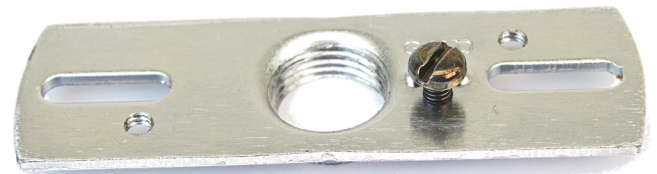
#375 Micro Crossbar

Universal crossbar 3.35"L x .783"W x .079" Thick
Tapped 8/32" Holes 2" Apart W/ Ground Screw
1/8" IPS Center Tapped



#339 Micro Crossbar

Universal crossbar 3.35"L x .783"W x .079" Thick
Tapped 8/32" Holes 2" Apart W/ Ground Screw
1/4" IPS Center Tapped 2" Apart



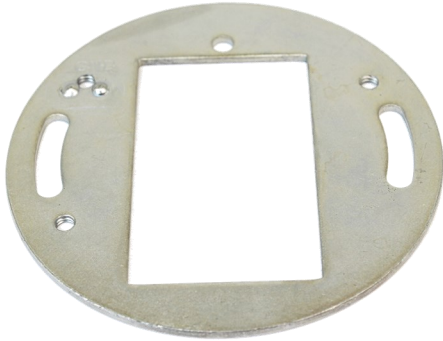
#338 Micro Crossbar

Universal crossbar 3.35"L x 1.021"W x .079" Thick
Tapped 8/32" Holes 2" Apart W/ Ground Screw
3/8" IPS Center Tapped

Pendant Systems

The Lighting Suspension Specialists www.PendantSystems.com P-215-638-8552 F-215-638-8554

Micro 3.5" Crossbars



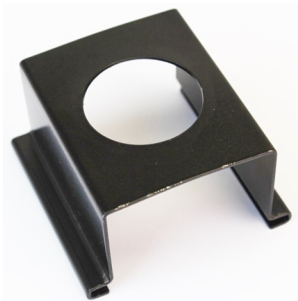
Micro Crossbar

Mono Point Crossbar Round 3.4"OD x .075" 14 Gauge Steel



Micro Plates

Center Mounting Plates for Micro Crossbar
2.153"L x 1.65" W x .075" Material Thickness Zinc Plated Steel
Tapped 8/32" Hole
Available in Tapped Center Holes (referenced below)
or Half Ball Opening for #35, 34, 147 Swivel Balls



MP Swivel Clip

Mono Point Swivel Retaining Clip for MP-Plate HB
Spring Steel

Catalog #	Description
Micro Plate HB	Mono Point Plate for Half Ball
Micro Plate 1/2 IP	1/2" IP Micro Mono Point Plate
Micro Plate 3/8 IP	3/8" IP Micro Mono Point Plate
Micro Plate 1/4 IP	1/4" IP Micro Mono Point Plate
Micro Plate 1/8 IP	1/8" IP Micro Mono Point Plate

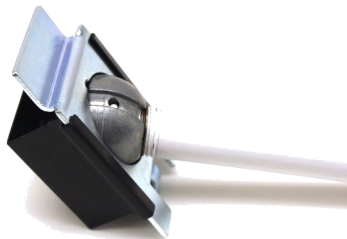


Illustration of Monopoint Swivel Assembly
utilizing MP Crossbar, MP Plate HB & MP Swivel Clip