

Pendant Systems

The Lighting Suspension Specialists www.PendantSystems.com P-215-638-8552 F-215-638-8554

Adjustable Field Cut Swivel Kits



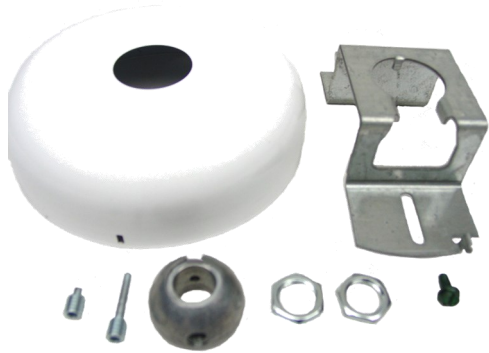
ADJ Tool Kit

Instruction Sheet, Drill Bit 1/8", Allen Wrench 1/8"
Tool Kit used for adjustable castings and set screws



34 ADJ-SSS

34 ADJ Casting
W/SSS & ADJ-SS

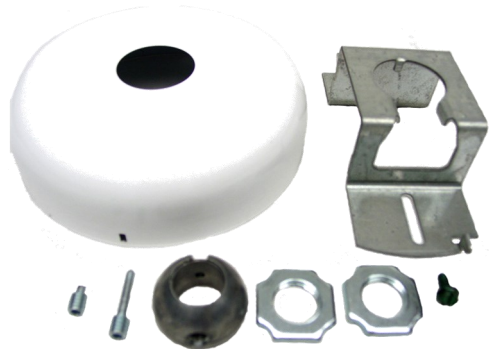


C-445 ADJ Canopy Set (1/4"IP)

- 1-#43 Canopy Wht. W/Side Holes
- 1-#33 Crossbar
- 1-#35 ADJ 1/4"IP Slip Half Ball
- 1-# SSS Socket Set Screw
- 2-#25 1/4"IP Locknuts
- 1-#32 Ground Screw

Swivel Canopy Set used with 1/4"IP stems for hanging fluorescent lighting and exit signs. Field Cut Pinning System.

Add Suffix PB for Painted Ball. (45° Degree Swivel)



C-545 ADJ Canopy Set (3/8"IP)

- 1-#43 Canopy Wht. W/Side Holes
- 1-#33 Crossbar
- 1-#34 ADJ 3/8"IP Slip Half Ball
- 1-# SSS Socket Set Screw
- 2-#22 3/8"IP Locknuts
- 1-#32 Ground Screw

Swivel Canopy Set used with 3/8"IP stems for hanging fluorescent lighting and exit signs. Field Cut Pinning System.

Add Suffix PB for Painted Ball. (45° Degree Swivel)



C-445 ADJ TK Canopy Set (1/4"IP)

- 1-#43 Canopy Wht. W/Side Holes
- 1-#33 Crossbar
- 1-#35 ADJ 1/4"IP Slip Half Ball
- 1-# SSS Socket Set Screw
- 1-Drill Bit 1/8"
- 1-Allen Wrench 1/8"
- 2-#25 1/4"IP Locknuts
- 1-#32 Ground Screw

Swivel Canopy Set used with 1/4"IP Stems for hanging fluorescent lighting and exit signs. Field Cut Pinning System.

Add Suffix PB for Painted Ball. (45° Degree Swivel)



C-545 ADJ TK Canopy Set (3/8"IP)

- 1-#43 Canopy Wht. W/Side Holes
- 1-#33 Crossbar
- 1-#34 ADJ 3/8"IP Slip Half Ball
- 1-# SSS Socket Set Screw
- 1-Drill Bit 1/8"; 1-Allen Wrench 1/8"
- 2-#22 3/8"IP Locknuts
- 1-#32 Ground Screw

Swivel Canopy Set used with 3/8"IP Stems for hanging fluorescent lighting and exit signs. Field Cut Pinning System.

Add Suffix PB for Painted Ball. (45° Degree Swivel)