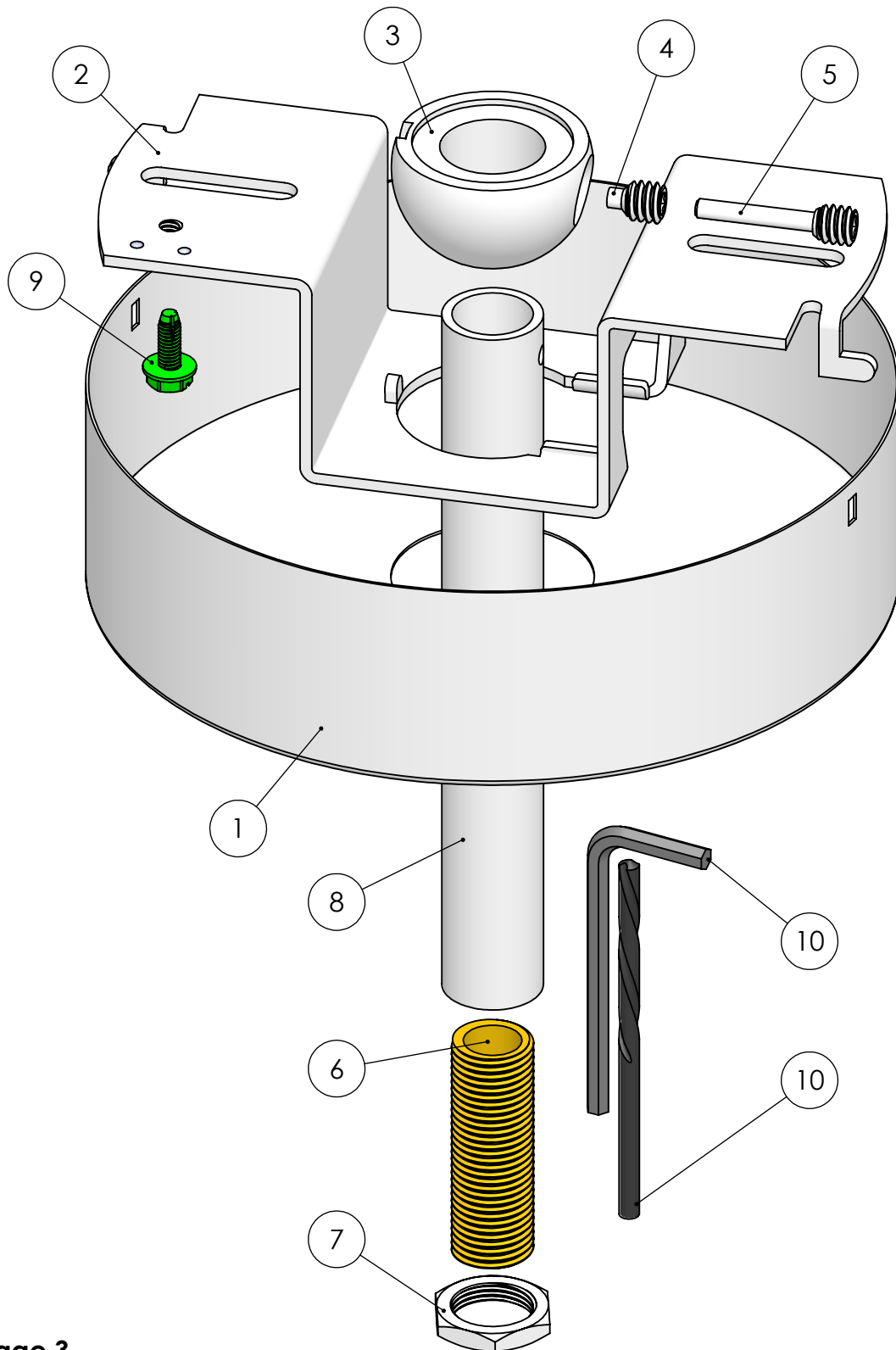


# OPTIONS TABLE

Base Part #	Total Stem Length	Color
SK3/8-ID TR[XX]	36	Matte White (WT)
	72*	Matte Black (BK)
	108*	

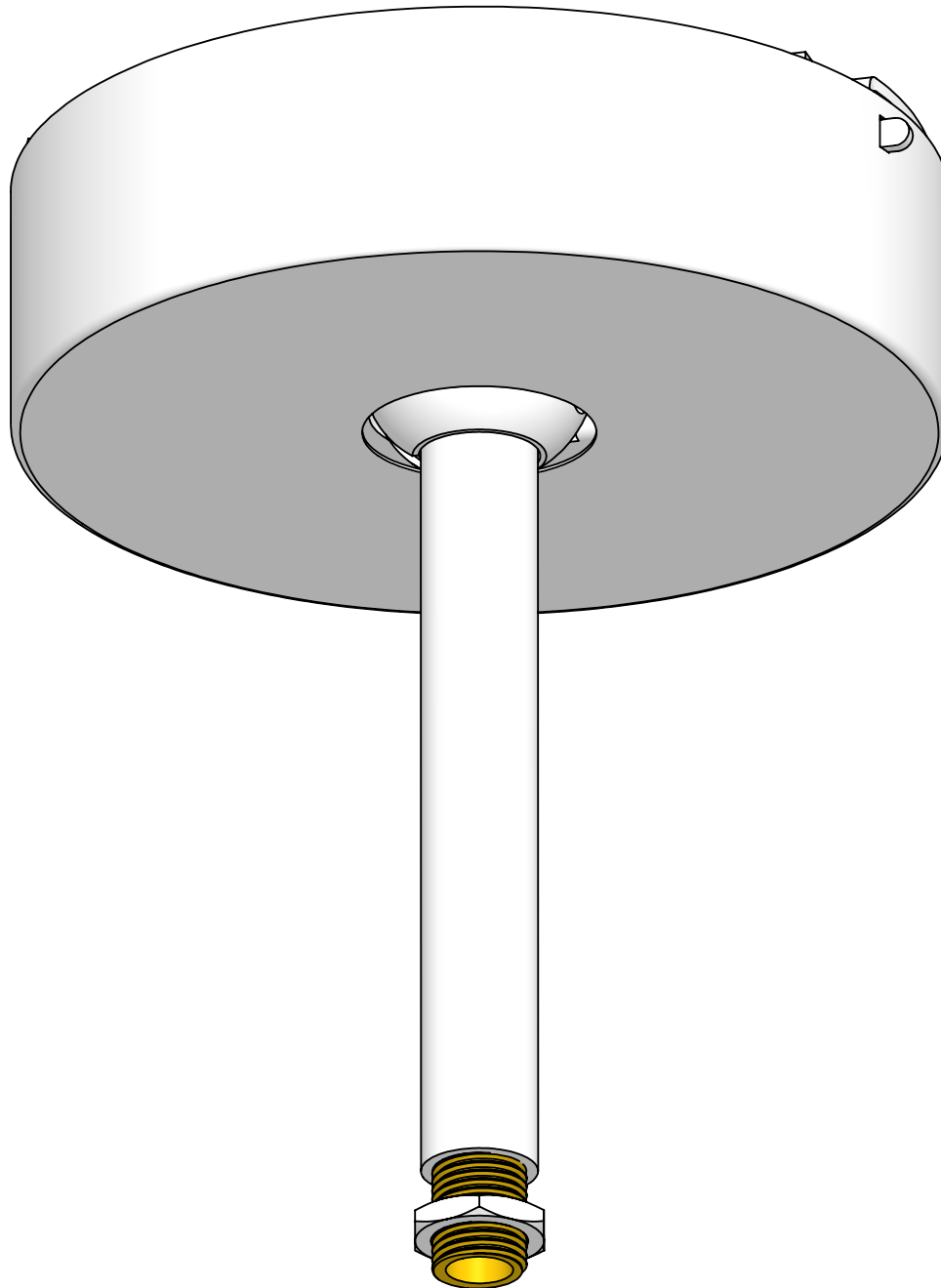
\*EX. **SK3/8-ID TR72WT** -  
 (1) 36" Stem 3/8" IP I.D.-I.D.  
 (2) #49-1.5

\*EX. **SK3/8-ID TR108BK** -  
 (2) 36" Stem 3/8" IP I.D.-I.D.  
 (3) #49-1.5



\*Reference Bill of Materials on Page 3

		*38° Swivel	This Document Contains Proprietary Data that is property of Pendant Systems which reserves all rights to it. Unauthorized use without authorization is prohibited.		<div>Pendant Systems</div> <div>1670 Winchester Rd. Bensalem, PA 19020 P-215-638-8552 F-215-638-8554 www.PendantSystems.com</div>	
UNLESS OTHERWISE SPECIFIED DIMENSIONS ARE IN BOTH INCHES & MILLIMETERS UNLESS OTHERWISE NOTED TOLERANCES:  LINEAR: XX= .02" XXX= $\pm .010"$ ANGULAR: $\pm 1$ Degree			FINISH:		TITLE:  SK 3-8-ID TR [XX]	
DO NOT SCALE DRAWING			MATERIAL:		Part #	
DEBUR AND BREAK SHARP EDGES						
DRAWN DATE: 6/22/17			Drawn By: MWR		SCALE: NTS	SHEET 1 OF 3
						REVISION



This Document  
Contains Proprietary  
Data that is property  
of Pendant Systems  
which reserves all  
rights to it.  
Unauthorized use  
without authorization  
is prohibited.

**Pendant Systems**  
1670 Winchester Rd.  
Bensalem, PA 19020  
P-215-638-8552  
F-215-638-8554  
[www.PendantSystems.com](http://www.PendantSystems.com)

UNLESS OTHERWISE SPECIFIED DIMENSIONS ARE IN BOTH INCHES &  
MILLIMETERS UNLESS OTHERWISE NOTED TOLERANCES:  
LINEAR: XX= .02" XXX=  $\pm .010"$  ANGULAR:  $\pm 1$  Degree

FINISH:

TITLE: SK 3-8-ID TR [XX] Assembled

DO NOT SCALE DRAWING  
DEBUR AND BREAK SHARP EDGES

MATERIAL:

Part #

DRAWN DATE: 6/22/17

Drawn By: MWR

SCALE: NTS

SHEET 2 OF 3

REVISION

ITEM NO.	PART NUMBER	DESCRIPTION	QTY.
1	#46	5" DIA x 1.4" H White 1.25" Center Hole with side slots for #33	1
2	#33	Swivel Crossbar for #34, #35, #147, & #272 ADJ Half Balls. 2" W x 4 7/8" L x 1 3/8" H x 14 Gauge	1
3	#34ADJ	3/8" IP Slip Half Ball Bright Casting	1
4	#ADJ-SS	1/4" -20 Short (.350" Long) Socket Set Screw w/.125" DIA Point & 1/8" Allen Hex Head Pin for ADJ Series Half Balls	1
5	#SSS	1/4" -20 Socket Set Screw w/.125" DIA & 1/8" Allen Hex Head Pin for ADJ Series Half Balls	1
6	49-1.5	1/4" IP Nipple 1.5" L	[XX]
7	#25	1/4" IP x 11/16 O.D. x 1/8" Thick Zinc Plated	1
8	36" Stem 3-8IP I.D. PH	36" Stem 3/8" IP w-1/4" IP ID Thread on Bottom. Pin Hole on Top	1
9	#32	8/32 Green Ground Screw	1
10	ADJ Tool Kit	Drill Bit 1/8" & Allen Wrench 1/8"	1

This Document  
Contains Proprietary  
Data that is property  
of Pendant Systems  
which reserves all  
rights to it.  
Unauthorized use  
without authorization  
is prohibited.

## Pendant Systems

1670 Winchester Rd.  
Bensalem, PA 19020  
P-215-638-8552  
F-215-638-8554  
[www.PendantSystems.com](http://www.PendantSystems.com)

UNLESS OTHERWISE SPECIFIED DIMENSIONS ARE IN BOTH INCHES & MILLIMETERS UNLESS OTHERWISE NOTED TOLERANCES:

LINEAR: XX= .02" XXX=  $\pm .010"$  ANGULAR:  $\pm 1$  Degree

FINISH:

TITLE:

Bill of Materials

DO NOT SCALE DRAWING

MATERIAL:

Part #

DEBUR AND BREAK SHARP EDGES

REVISION

DRAWN DATE: 6/22/17

Drawn By: MWR

SCALE: NTS

SHEET 3 OF 3