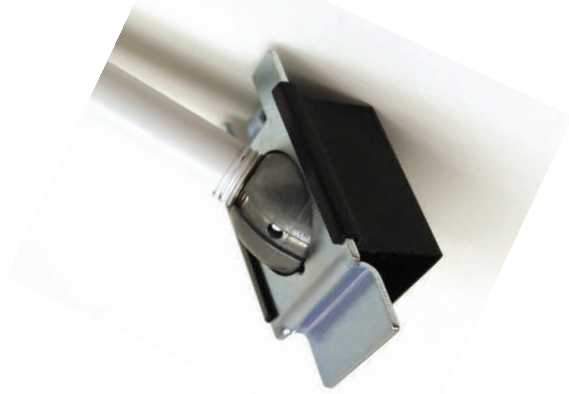
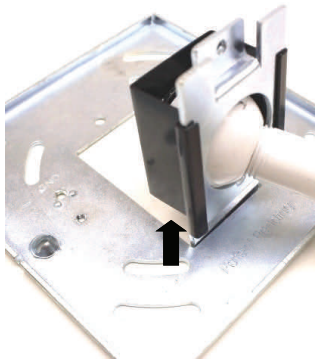


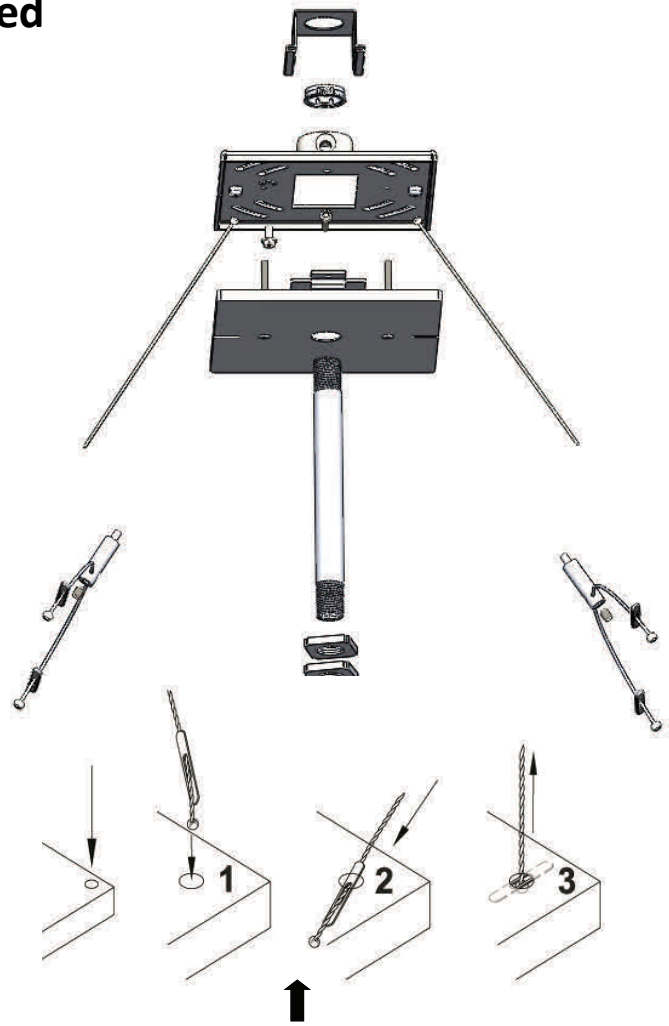
Mono Point High Bay Swivel Stem Feed Suspension Assembly Instructions



Assemble MP-Plate HB on stem with half ball on stem, then slide MP Swivel clip black side down on MP-Plate HB



Insert tail end; then shift tapped side on inside of crossbar and fasten with 8/32" screw.



Paddle insertion into fixture

Warning Electrical Shock Hazard: All wiring should be done by a qualified electrical professional

Disconnect all power sources before attempting to install

- 1) Insert half ball end cables into Mono Point Crossbar and mount as shown to 4" octagonal or 4" square box. *Tip: If you back off screws on crossbar then MP Plate will slide closer to J-Box. Remember to tighten crossbar screws when MP Plate, J-Box and MP Crossbar are in place.
- 2) Assemble gripper attachments (type will vary) to fixture. Assemble stem into fixture with locknuts and pull wiring conductors out 6" longer than stem.
- 3) Insert canopy on stem. Place MP-Plate HB onto threaded half ball onto stem. Insert plastic snap bushing into swivel clip and slide onto MP-Plate HB.
- 4) Pick up fixture and insert cable ends into gripper assemblies. Adjust height so stem is short of J-Box.
- 5) Make electrical and grounding connections.
- 6) Hinge MP-Plate as shown above on inside of MP Crossbar. Slide the plate in so the tapped screw holes on the other side of the plate align with the crossbar. Fasten in place with 8/32" screw.
- 7) Push canopy to junction box and fasten to crossbar using 2-6/32" screws.
- 8) Re-adjust gripper assemblies so cables are taking weight from ends of fixture.
- 9) Insert the Philips Tap Caps to the top of the Philips screws on the canopy.

Assembly is rated for 50 Lbs. Static Loads Only (No dynamic or moving loads). Not for chemical or pool corrosive environments. Mono Point Patent Pending Pendant Systems Mfg. 5/2013