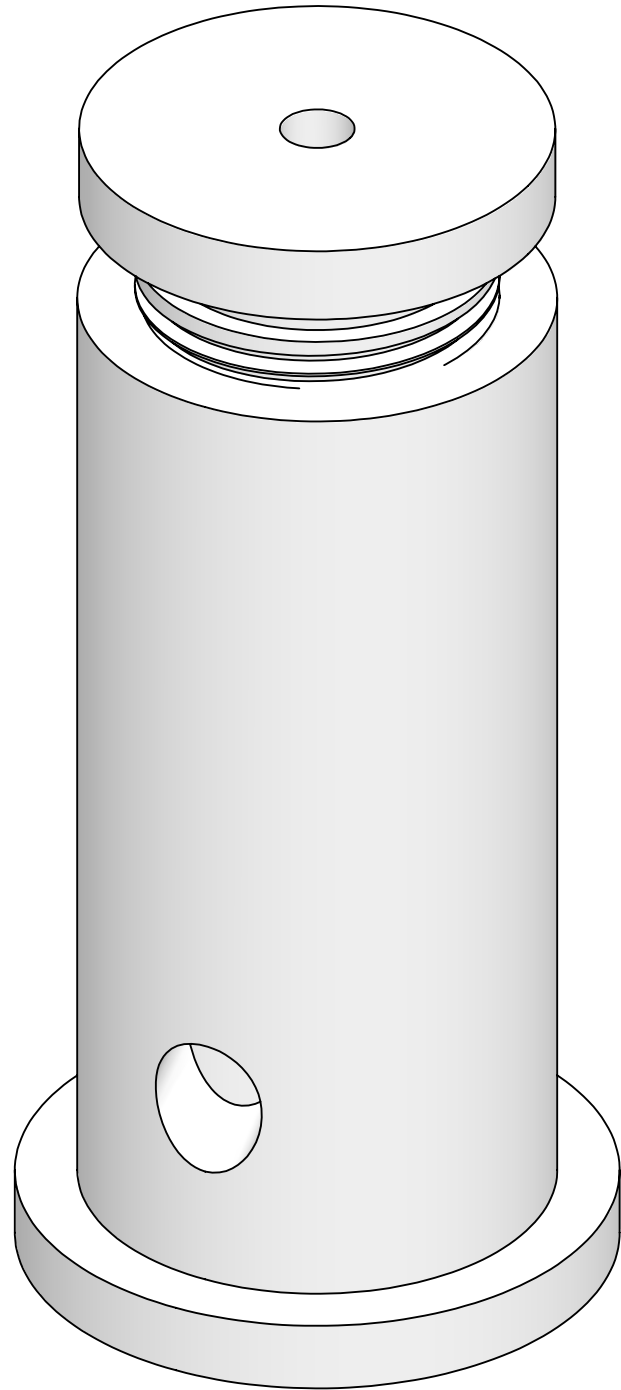


1/4"-20 Tapped Hole



Standoff with 1/8" IP Cap for Cable Stops.
 Base has 1/4"-20 Tapped Hole in Base for
 Screw and Hole for Cable Side Exit when
 used with MGR 1/8" IP
 1.223" H x .630" W

This Document
 Contains Proprietary
 Data that is property
 of Pendant Systems
 which reserves all
 rights to it.
 Unauthorized use
 without authorization
 is prohibited.

Pendant Systems

1670 Winchester Rd.
 Bensalem, PA 19020
 P-215-638-8552
 F-215-638-8554
 www.PendantSystems.com

UNLESS OTHERWISE SPECIFIED DIMENSIONS ARE IN BOTH INCHES & MILLIMETERS UNLESS OTHERWISE NOTED TOLERANCES:

LINEAR: XX= .02" XXX= ±.010" ANGULAR: ± 1 Degree

FINISH:
Nickel

TITLE:
 CC1-8 SO Rev-1

DO NOT SCALE DRAWING
 DEBUR AND BREAK SHARP EDGES

MATERIAL:
Brass

Part #
 CC1-8 SO Rev-1

DRAWN DATE: 3/12/21

Drawn By: MCL

SCALE: NTS

SHEET 1 OF 1

REVISION
1