

CROSSBAR W/GS

1/4"IP NIPPLE

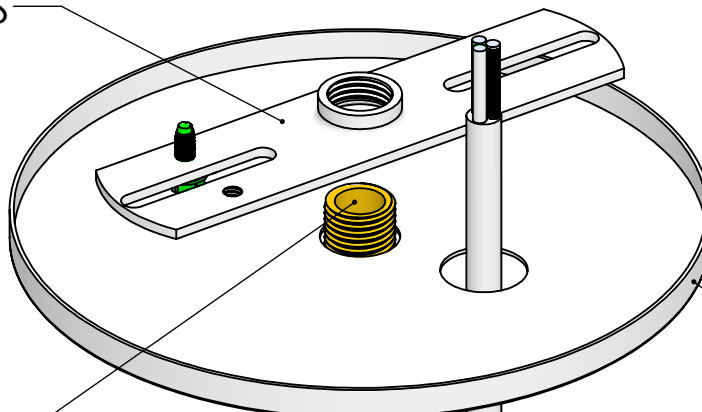
CC SLOT 1/4IP

1/16" CABLE

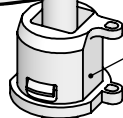
GRIPPER

CROSS CABLE

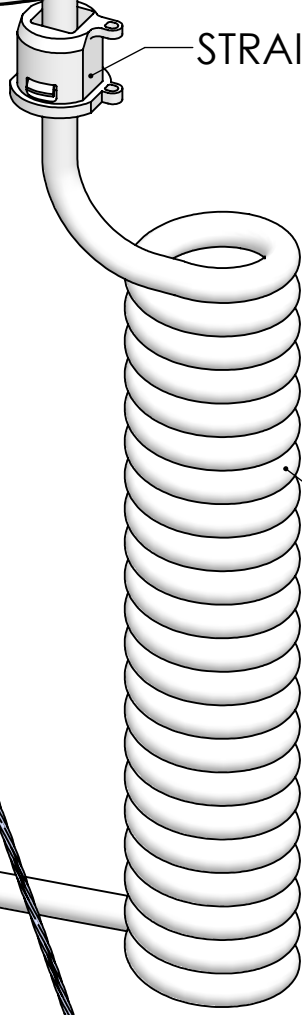
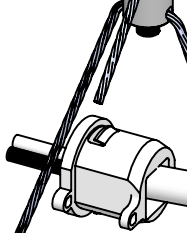
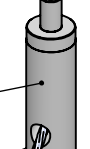
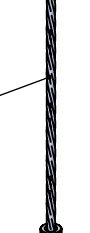
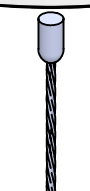
\*PARTS MAY VARY  
DEPENDING ON MODEL



5" CANOPY



STRAIN RELIEF



POWER CORD  
(18/3 COIL)

HALF BALL END

This Document  
Contains Proprietary  
Data that is property  
of Pendant Systems  
which reserves all  
rights to it.  
Unauthorized use  
without authorization  
is prohibited.

**Pendant Systems**

1670 Winchester Rd.  
Bensalem, PA 19020  
P-215-638-8552  
F-215-638-8554  
www.PendantSystems.com

UNLESS OTHERWISE SPECIFIED DIMENSIONS ARE IN BOTH INCHES & MILLIMETERS UNLESS OTHERWISE NOTED TOLERANCES:  
LINEAR: XX= .02" XXX=  $\pm .010"$  ANGULAR:  $\pm 1$  Degree

FINISH:  
MATERIAL:

Part #  
Power Feed J-Box Mount Cross CS 18-3 Coil

DO NOT SCALE DRAWING  
DEBUR AND BREAK SHARP EDGES

MATERIAL:

Title:  
REVISION

DRAWN DATE: 10/26/18

Drawn By: MWR

SCALE: NTS

SHEET 1 OF 1

REVISION