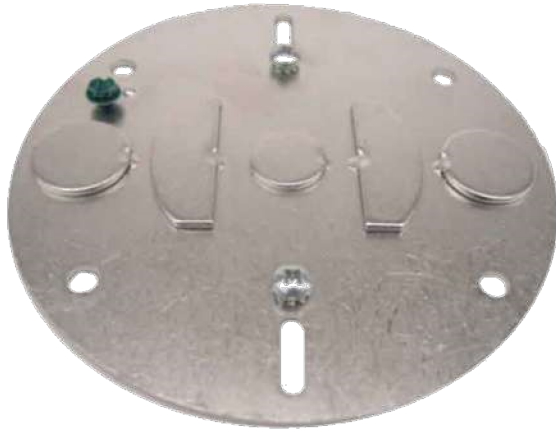


# Pendant Systems

The Lighting Suspension Specialists [www.PendantSystems.com](http://www.PendantSystems.com) P-215-638-8552 F-215-638-8554

## Flash Plate



### Flash Plate

- 4.94" diameter x .074" steel zinc plated material
- .675" center knockout and two oval shaped knockouts for wiring into J-Box
- Two 1/2"IP (.875") side hole knockouts
- Four 1/4" mounting holes & two 8/32" tapped holes for mounting crossbar to plate
- Ground screw and 8/32" mounting screws included
- Flash Plate can be ordered by itself Part# FP or Flash Plate can be ordered as a kit with crossbar assembled to Flash Plate.

1.) Add suffix FP to Canopy Set catalog #

Example: C545 FP

2.) Caddy Clip and wing nut can be included into kit

Add suffix DC to catalog #

Example: C545 FP DC WPB

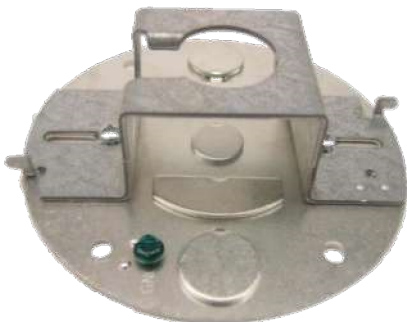
(3/8"IP Swivel Kit/Flash Plate/Caddy Clip/Painted Ball)



C545 FP WPB Assembled



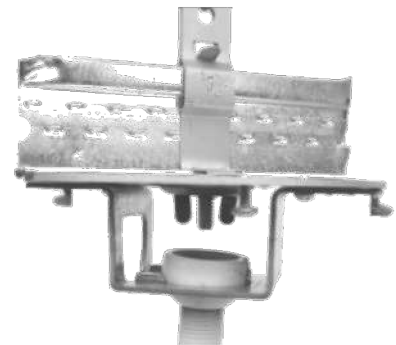
Components of C545 FP Individually Bagged w/Your Company Logo



Flash Plate Shown attached to the #33 Crossbar



Flash Plate Shown attached to the #15 Crossbar



Flash Plate Usage shown with 3/8" Caddy Clip 1/2" KO's allow electrical feed around T-Bar