

Pendant Systems

The Lighting Suspension Specialists www.PendantSystems.com P-215-638-8552 F-215-638-8554

Field Cut Stem Adapter System



SA 1/8 x 1/8



SA 1/4 x 1/8



SA 1/4 x 1/4



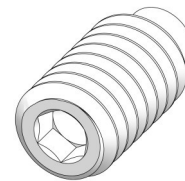
SA 3/8 x 3/8



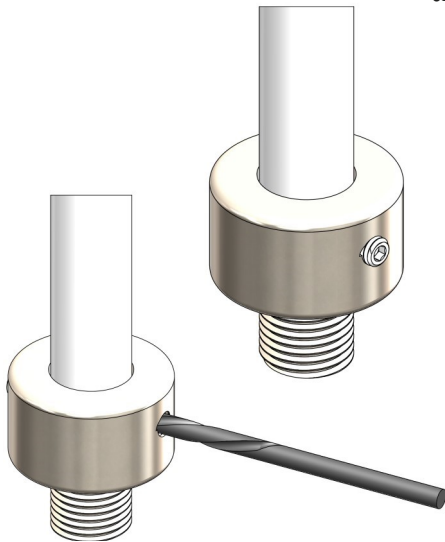
SA 1/2 x 1/2

[X]/[X] refers to the I.D. Where the stem will sit

[X]/[X] refers to the thread (IPS)



273



1. Cut stem to desired length and deburr inside edge. Insert SA (Stem Adapter) casting onto the stem with the edge of the cut even with the back of the casting and insert one of the #273 screws and tighten the set screw in the casting so the screw "bites" onto the stem.
2. Drill a 1/8" hole through the tapped hole, opposite the set screw on the casting through the stem. *Always use eye protection*
3. Loosen the set screw in the casting and rotate 180 degrees placing the set screw centered on the drilled 1/8" hole. Tighten screw allowing the stem to be fastened in place. *You should see one pin on the inside of the stem when set correctly.*
4. Drill a second 1/8" hole through the other tapped hole on the casting and through the stem. *Deburr any sharp edges on the I.D. of the stem from drilling holes.*
5. Insert and tighten the second #273 screw into the tapped hole and through the drilled hole in the stem using the Allen Wrench so the pin engages through the inside of the stem.

