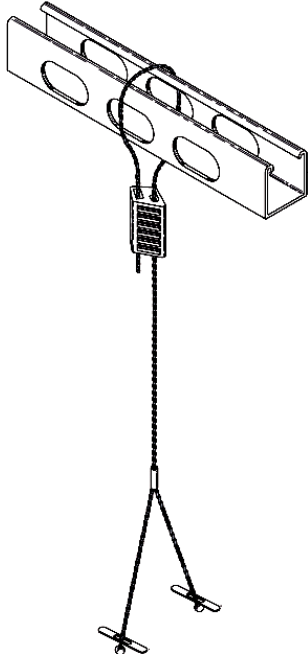


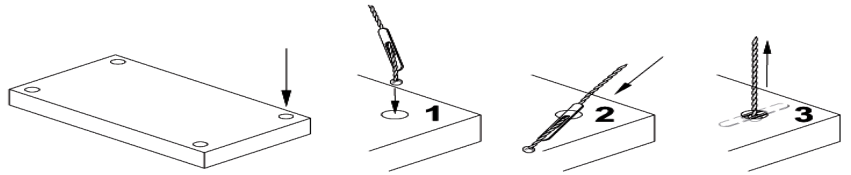
## High Bay "Y"- Cable Suspension Kits



High Bay Suspension Kit, includes 2 each galvanized 1/16" cables with "Y" intersection with 18" legs, with captive paddles for inserting into .250" holes in fixture. Kits includes 2 each of KL-100 Kwik Locks for attaching the single end of the cable around structure. 75Lbs Per Cable Max Weight

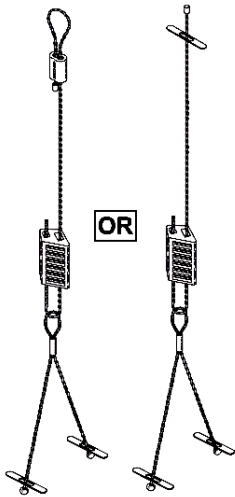
HB-60-18Y-PAD	Packed with 2 each 60" Y Cables and Kwik Locks
HB-120-18Y-PAD	Packed with 2 each 120" Y Cables and Kwik Locks
HB-180-18Y-PAD	Packed with 2 each 180" Y Cables and Kwik Locks
HB-240-18Y-PAD	Packed with 2 each 240" Y Cables and Kwik Locks

Paddle  
Insertion  
Into  
Fixture



## High Bay "Y"- Cable Loop and Paddle Suspension Kits

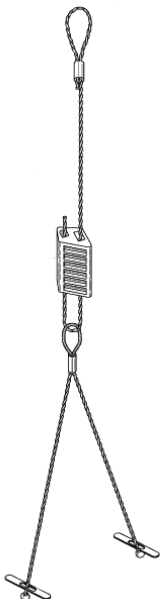
This High Bay Kit allows use of our standard galvanized steel stock cable assemblies with #1 stop to loop over structure using the #112 loop adapter or insert thru 1/4" Hole in metal decking using PD-1/16 Paddle end with cable stop. The cut end of cable captures the loop in Y paddle assembly using the KL-100 Kwik Lock device. The height adjustability would be directly overtop the fixture end for easy adjustability. 75Lbs Per Cable Max Weight



HB-72-18Y PAD-L&P	2-AC1/16-72, 2-#112, 2-PD1/16, 2-KL100, 2-AC1/16-36-18Y PAD
HB-120-18Y PAD-L&P	2-AC1/16-120, 2-#112, 2-PD1/16, 2-KL100, 2-AC1/16-36-18Y PAD
HB-200-18Y PAD-L&P	2-AC1/16-200, 2-#112, 2-PD1/16, 2-KL100, 2-AC1/16-36-18Y PAD
HB-250-18Y PAD-L&P	2-AC1/16-250, 2-#112, 2-PD1/16, 2-KL100, 2-AC1/16-36-18Y PAD

## High Bay "Y"- Cable Loop End and Paddle Suspension

High Bay Suspension Kit, includes 2 each of galvanized 1/16" cables with Loop End and "Y" intersection with 18" legs, with captive paddles for inserting into .250" holes in fixture. Kits includes 2 each of KL-100 Kwik Locks for attaching the single end of the cable to top of Y Assembly directly overtop of fixture. 75Lbs Per Cable Max Weight



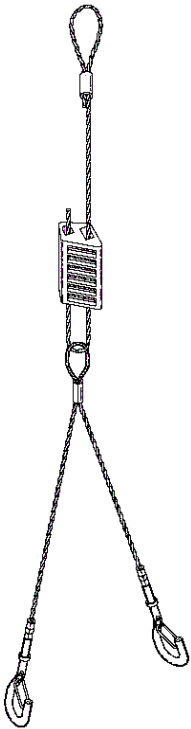
HB-60-18Y-LE-PAD	2-AC1/16-60G-L, 2-KL100, 2-AC1/16-36-18Y PAD
HB-120-18Y-LE-PAD	2-AC1/16-120G-L, 2-KL100, 2-AC1/16-36-18Y PAD
HB-180-18Y-LE-PAD	2-AC1/16-180G-L, 2-KL100, 2-AC1/16-36-18Y PAD
HB-240-18Y-LE-PAD	2-AC1/16-240G-L, 2-KL100, 2-AC1/16-36-18Y PAD
HB-300-18Y-LE-PAD	2-AC1/16-300G-L, 2-KL100, 2-AC1/16-36-18Y PAD



## High Bay / Cable Tray Y-Hook - Cable Suspension Kits

High Bay / Cable Tray Suspension Kit, includes 2 each of: galvanized 3/32" cables with "Y" intersection with 18" legs with snap hook style ends and KL-100 Kwik Locks for attaching the single end of the cable around structure .  
150 Lbs Per Cable Max Weight

HK-60-18Y	Packed with 2 each 60" Y Cables and Kwik Locks
HK-120-18Y	Packed with 2 each 120" Y Cables and Kwik Locks
HK-180-18Y	Packed with 2 each 180" Y Cables and Kwik Locks
HK-240-18Y	Packed with 2 each 240" Y Cables and Kwik Locks
Also Available in Single Pack- Add -S Suffix to Part # Below for Single Pack	



## High Bay / Cable Tray Loop and Y-Hook Suspension Kits

High Bay / Cable Tray Kit allows use of our standard galvanized steel 3/32" stock cable assemblies with 1" loop end over structure. Then the cut end of cable captures the loop in Y-Hook cable assembly using the KL-100 Kwik Lock device. The height adjustability would be directly overtop the fixture / cable tray end for easy adjustability. 150 Lbs Per Cable Max Weight

HK-60-18Y-L	2-AC3/32-72G-L, 2-KL100, 2-AC3/32-36G-18Y-HK
HK-120-18Y-L	2-AC3/32-120G-L, 2-KL100, 2-AC3/32-36G-18Y-HK
HK-180-18Y-L	2-AC3/32-180G-L, 2-KL100, 2-AC3/32-36G-18Y-HK
HK-240-18Y-L	2-AC3/32-240G-L, 2-KL100, 2-AC3/32-36G-18Y-HK
Also Available in Single Pack- Add -S Suffix to Part # Below for Single Pack	



## Safety Cable Kits

Simple Safety Cable Kit for using the stop end of cable with the #112 Duplex ferrule around a mounting support then down to fixture (Thru pendant) to inside a fixture for attachment there with the #113 Cable Locking Tube.

1 Cable, 112, 113 Per Kit  
50 Lbs Per Cable Max Weight

Safety Cable Kit 50"	1-AC1/16-50G, 1-#112, 1-#113
Safety Cable Kit 72"	1-AC1/16-72G, 1-#112, 1-#113
Safety Cable Kit 100"	1-AC1/16-100G, 1-#112, 1-#113
Safety Cable Kit 120"	1-AC1/16-120G, 1-#112, 1-#113
Safety Cable Kit 150"	1-AC1/16-150G, 1-#112, 1-#113

## High Bay Loop End Kit W/ 1/16" Cable

High Bay suspension kit includes 2 each of: galvanized 1/16" cables with loop end cable for looping around structure and KL-100 Kwik Locks for attaching the single end of the cable to the fixture. 75 Lbs Per Cable Max Weight

HB-60-Loop 1/16	Packed with 2 each 60" Y Cables and Kwik Locks
HB-120-Loop 1/16	Packed with 2 each 120" Y Cables and Kwik Locks
HB-180-Loop 1/16	Packed with 2 each 180" Y Cables and Kwik Locks
HB-240-Loop 1/16	Packed with 2 each 240" Y Cables and Kwik Locks
HB-300-Loop 1/16	Packed with 2 each 300" Y Cables and Kwik Locks

Also Available in Single Pack- Add -S Suffix to Part # Below for Single Pack

1/16"  
Cable



## High Bay Loop End Kit W/ 3/32" Cable

High Bay suspension kit includes 2 each of: galvanized 3/32" cables with loop end cable for looping around structure and KL-100 Kwik Locks for attaching the single end of the cable to the fixture. 150 Lbs Per Cable Max Weight

HB-60-Loop 3/32	Packed with 2 each 60" Y Cables and Kwik Locks
HB-120-Loop 3/32	Packed with 2 each 120" Y Cables and Kwik Locks
HB-180-Loop 3/32	Packed with 2 each 180" Y Cables and Kwik Locks
HB-240-Loop 3/32	Packed with 2 each 240" Y Cables and Kwik Locks

Also Available in Single Pack- Add -S Suffix to Part # Below for Single Pack

3/32"  
Cable



Line Drawings of these hardware assembly sets are available at the PDF's / Drawings Web Page