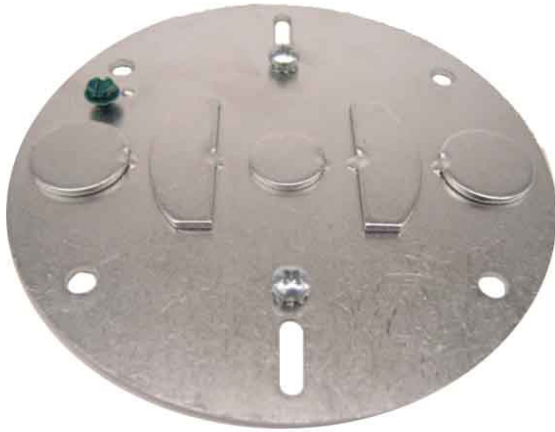


Flash Plate



Flash Plate

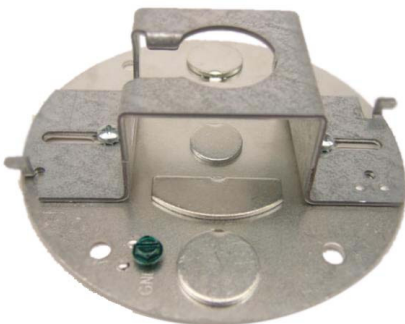
.494" Diameter x .074" Steel Zinc Plated Material
.675" Center Knockout and two Oval shaped Knockouts for wiring into J-Box
Two 1/2"IP (.875") Side hole knockouts
Four 1/4" Mounting Holes Two 8/32" tapped Holes for mounting crossbar to plate
Ground Screw and 8/32" Mounting Screws included
Flash Plate Can be ordered by itself Part# FP or Flash Plate can be ordered as a kit with crossbar assembled to Flash Plate.
Add suffix FP to Canopy Set catalog #
Example: C545 FP
Caddy Clip and wing nut can be included into kit
Add suffix DC to catalog #
Example: C545 FP DC WPB
(3/8"IP Swivel Kit/Flash Plate/Caddy Clip/Painted Ball)



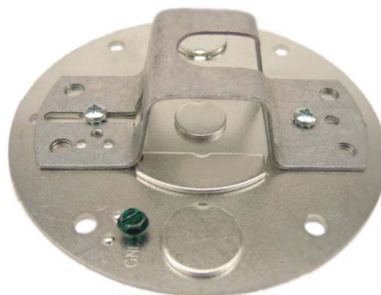
C545 FP WPB Assembled



Components of C545 FP
Individually Bagged w/Your Company Logo



Flash Plate Shown attached to the #33 Crossbar



Flash Plate Shown attached to the #15 Crossbar.



Flash Plate Usage shown with 3/8" Caddy Clip 1/2" KO's allow electrical feed around T-Bar