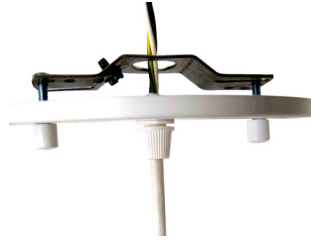
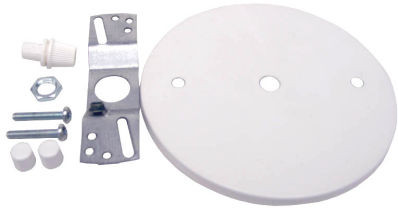
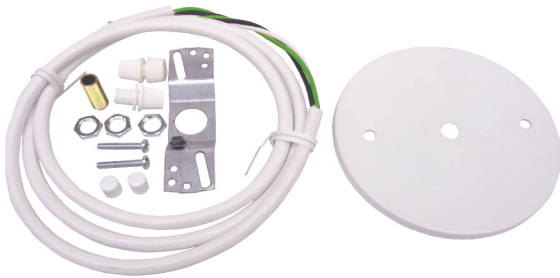


Cord Kits & 1/4"-1/8"IP Stem Kits



Cord Kit SVT WHT (Also Black Available)

- 1-#93B M2D3.5 5" Flat Canopy White .4" CH & .250" Holes
 - 1-#67 1/4" IP Slip Crossbar
 - 1-Mini Cord Grip White Male 1/8" IP Thread W/Cap
 - 1-#133 1/8" IP Hex Nut
 - 2-#190 -8/32" Screws x 1" Long
 - 2-#187 -8/32" Cap Nuts White
- For .250" Cord Diameter and smaller. (SVT Cord)
5 Lb Weight Limitation



Cord Kit SVT WHT 5-CD (Also Black Available)

- 1-#93 M2D3.5 5" Flat Canopy White .4" CH & .250" Holes
 - 1-#67 1/4" IP Slip Crossbar
 - 1-Mini Cord Grip White Male W/ 1/8" IP Thread W/Cap
 - 3-#133 1/8" IP Hex Nut
 - 2-#190 -8/32" Screws x 1" Long
 - 2-#187 -8/32" Cap Nuts White
 - 1-Mini Cord Grip White Female W/ 1/8" IP Thread
 - 1-#60-1 1/8" IP Nipple 1" Long
 - 5' - White 18/3 SVT Cord W/6" Strips Both Ends
- For .250" Cord Diameter and smaller. (SVT Cord) 5Lb Max



Cord Kit WHT (Also Black Available)

- 1-#84 5" Flat Canopy White W/.720 CH
- 1-#38 3/8" IP Tapped Crossbar
- 1-Cord Grip White

Cord Grip will accommodate .105" - .315" Diameter Cord
18/3 SVT & 18/3 SJT
5 Lb Weight Limitation



C405 1/8IP (Also Black Available)

- 1-#48 5" White Shallow Canopy W/ 1/4" IP Slip Ring
- 1-#39 1/4" IP Tapped Crossbar
- 1-#25 1/4" IP Hex Nut
- 1-#60-1 1/8" IP Nipple x 1" Long
- 2-#133 1/8" IP Hex Nuts

Used with 1/4" IP Stems with 1/8" IP ID Thread on one End.



C405 1/8IP ADJ (Also Black Available)

- 1-#48 5" White Shallow Canopy W/ 1/4" IP Slip Ring
- 1-#67 1/4" IP Slip Crossbar
- 2-#31 1/4" IP Slip Rings W/8/32" Screws at 90°
- 1-#60-1 1/8" IP Nipple x 1" Long
- 2-#133 1/8" IP Hex Nuts

Used with 1/4" IP Stems with 1/8" IP ID Thread on one End. Rings will allow installer to cut stem to desired length.